

M

MEŽAPARKA

REZIDENCES

VILLA CAMELLIA

Jaunā Mežaparka iela 17, Rīga

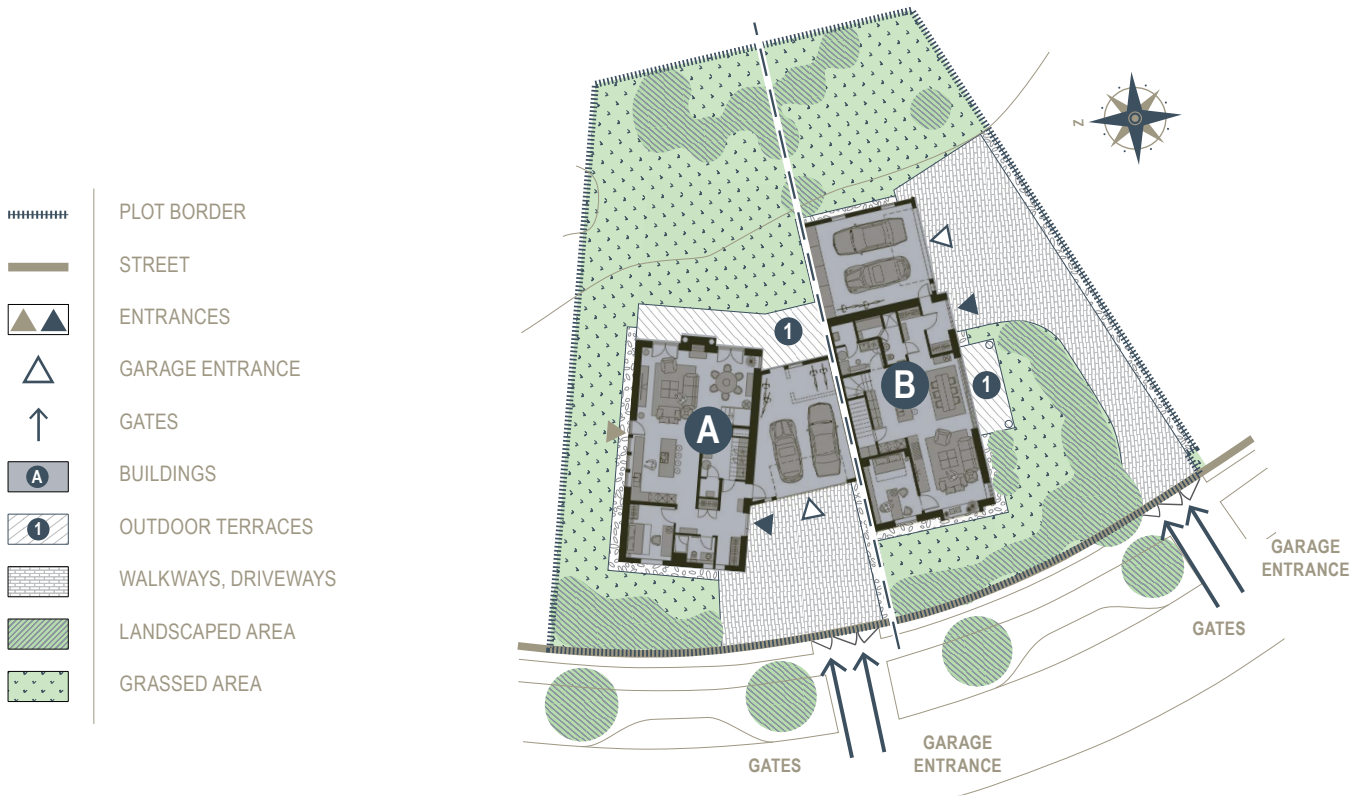


	A villa	B villa
Area:	285 m ²	253 m ²
Terraces:	51 m ²	25 m ²
Floors:	2	2
Rooms:	5	5
WC:	3	3
Parking spaces:	2	2
Plot area:	652 m ²	627 m ²

This twin villa was designed in the spirit of classical architecture with a nod to historic styles and canons. The living areas are divided by a garage, guaranteeing privacy for the owners of each space. Expansion of the street-side green belt and the highlighting of the garden city atmosphere, characteristic of Mežaparks, results in a multi-functional outdoor living area. The architecture is developed from indoors out – a compact two-storey space that stresses ease of access, orientation towards the sun, and connections to the outdoors. This was created with space functionality in mind.

Architect Gatis Didrihsons / "Didrihsons arhitekti"

LOCATION PLANS



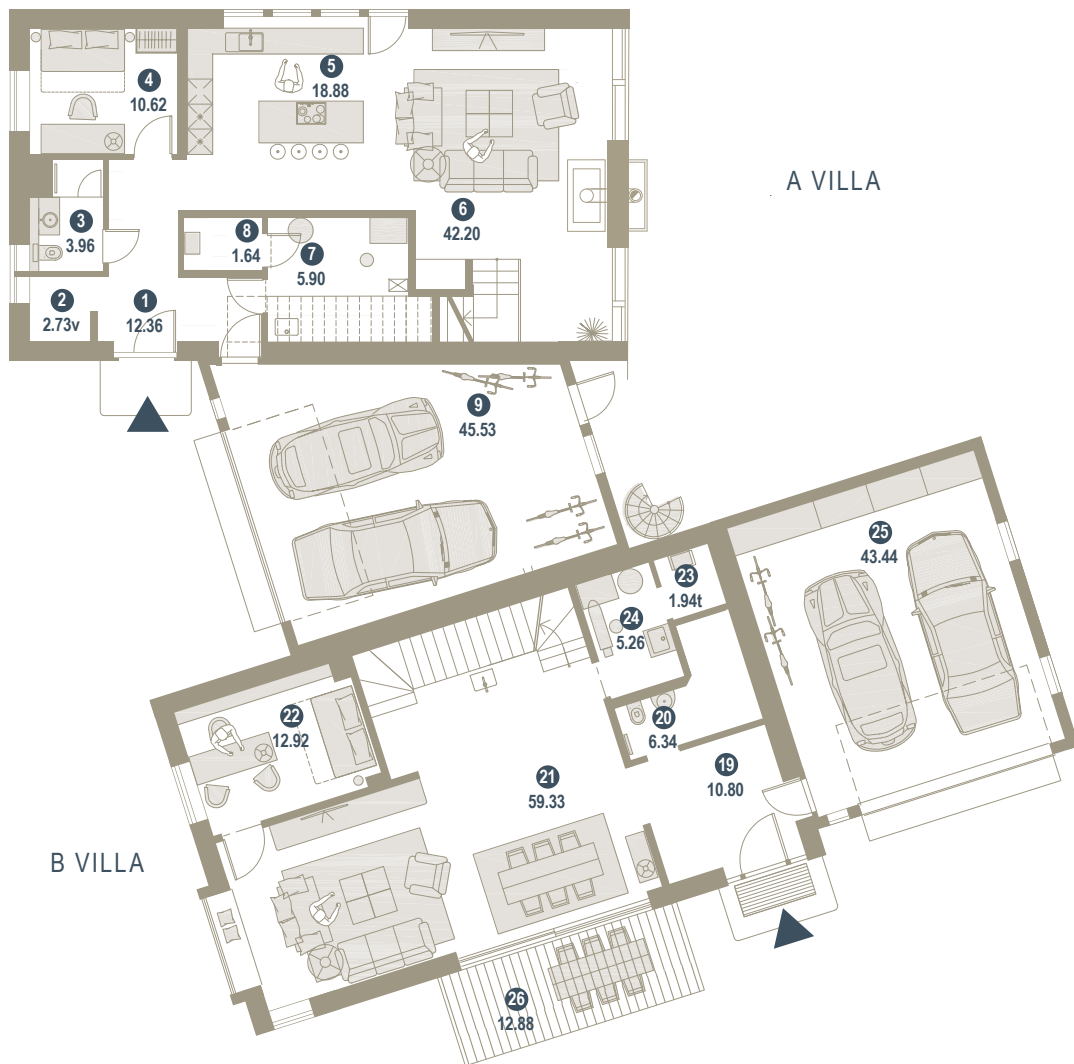
1st FLOOR PLAN / m²

A VILLA

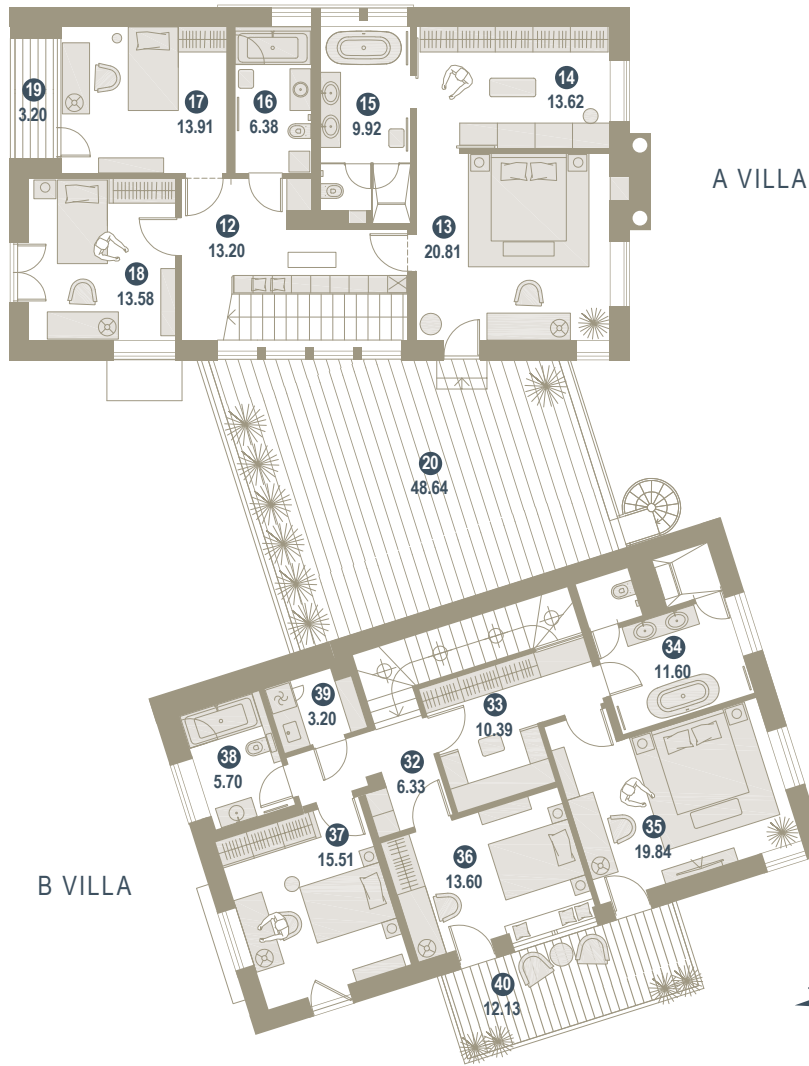
1. FOYER	12.36
2. WARDROBE	2.73
3. WC/SHOWER	3.96
4. OFFICE/ GUEST ROOM	10.62
5. EAT-IN KITCHEN	18.88
6. LIVING ROOM	42.20
7. UTILITY ROOM	19.44
8. HEATING SYSTEM ROOM	1.64
9. GARAGE	45.53
TOTAL INTERIOR SPACE	143.82

B VILLA

19. FOYER	10.80
20. WC/SHOWER	6.34
21. LIVING ROOM	59.33
22. OFFICE/ GUEST ROOM	12.92
23. HEATING SYSTEM ROOM	1.94
24. UTILITY ROOM	5.26
25. GARAGE	43.44
26. TERRACE	12.88
TOTAL INTERIOR SPACE	152.91



2nd FLOOR PLAN / m²



A VILLA

10. CORRIDOR	12.99
11. BEDROOM	13.33
12. BEDROOM	13.61
13. BATHROOM	6.19
14. BATHROOM	9.57
15. WARDROBE	13.54
16. BEDROOM	21.54
17. TERACCE	47.83
18. BALCONY	3.05
TOTAL INTERIOR SPACE	141.13
TOTAL EXTERIOR SPACE	50.88

B VILLA

27. LIVING ROOM	52.94
28. BATHROOM	11.51
29. BEDROOM	15.25
30. BATHROOM	5.70
31. UTILITY ROOM	3.00
32. BALCONY	12.18
TOTAL INTERIOR SPACE	100.58
TOTAL EXTERIOR SPACE	12.18



FINISHING SOLUTION A VILLA

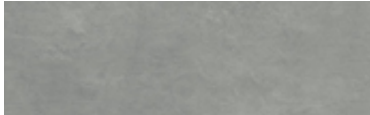
LIVING ROOM, CORRIDOR, OFFICE (NR.1; 4; 6)



Triple-layer parquet flooring
BOEN oak Animoso



Light gray wall paint



Fireplace – stone tiles



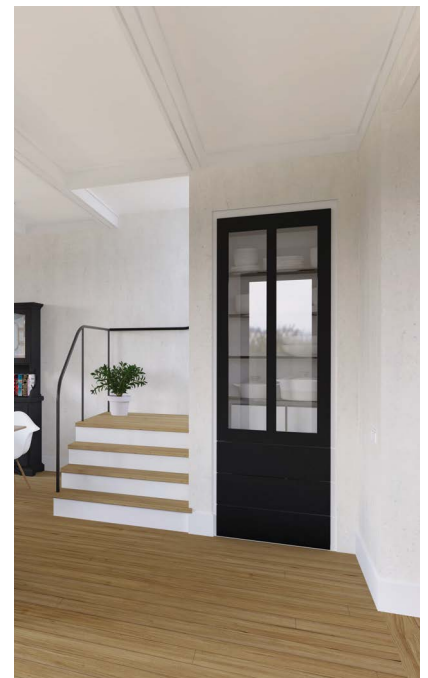
Decorative stone tiles
Via Art Nouveau
in the corridor



Treated ash decking with
invisible supports



Decorative wallpaper
in the office
ZOFFANY Nureyev



KITCHEN | DINING AREA (NR. 5)

Bulthaup design.

The open kitchen centers around a raised breakfast island with a lower prep area, sink, and dishwasher and includes built-in appliances.

- Surfaces are white, ~12mm composite materials with laser-cut edging
- Island finished with oak and stone
- Island surface solid oak



FLOS light fixtures above the dining area table



FLOS ceiling light fixtures



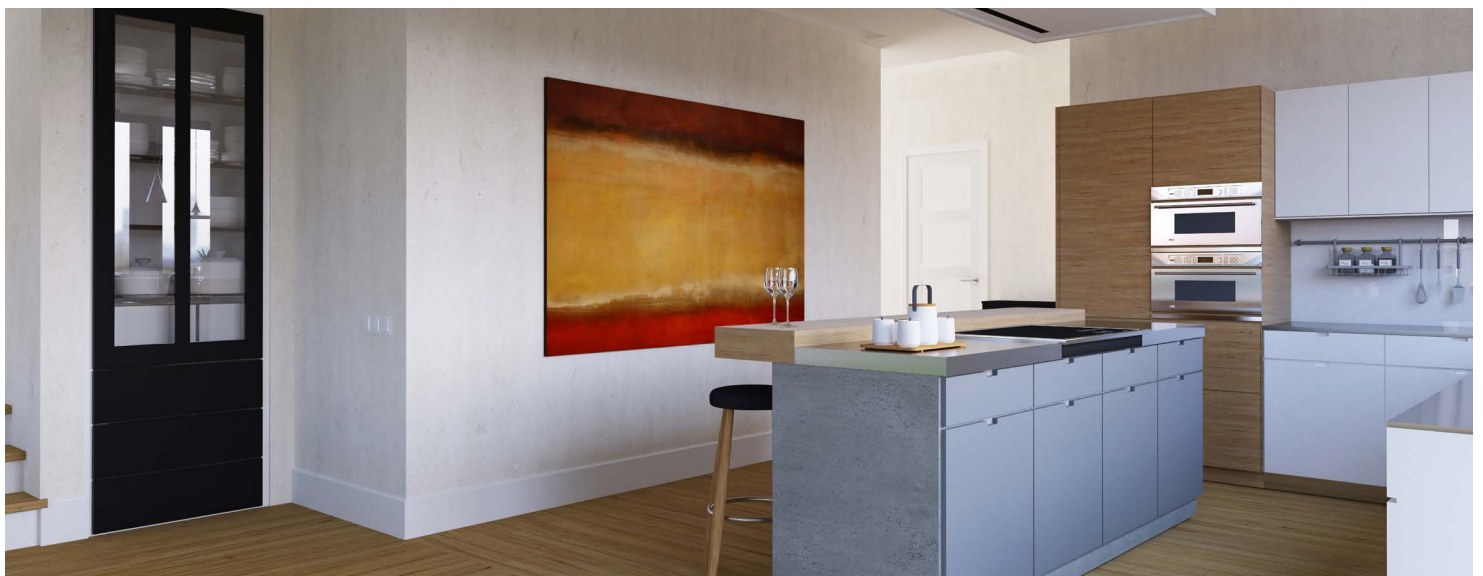
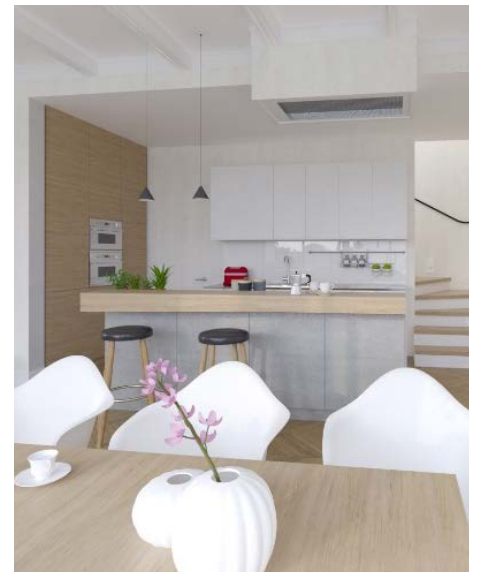
FLOS built-in lighting



Artemide built-in lighting



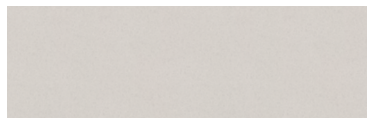
Deltalight built-in lighting



BEDROOMS (NR. 11; 12; 16)



Triple-layer parquet flooring
BOEN oak Animoso



Terrace covered with
frost-resistant tiles



Painted plaster-board or
textured ceilings



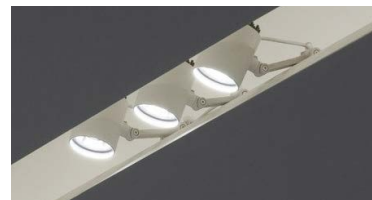
White painted plaster-board
ceilings between 2nd floor
wood beams



MAMMALAMPA ceiling light fixture in
the master bedroom

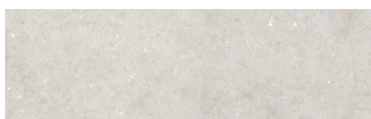


Decorative wallpaper in the master
bedroom Pure Morris



FLOS built-in
lighting

UTILITY ROOMS (NR.7; 9; 3)



Mono-colored stone tiles



Painted plaster-board or
textured walls

GARAGE (TELPA NR.9)



Stone-finish stone
interlocking brick



Painted plaster-board or
textured walls

MASTER BATHROOM (NR. 16)



DURAVIT ME
by Starch SensoWash
toilet with soft-close cover



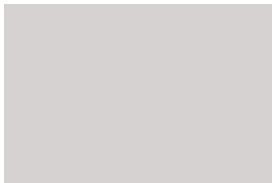
HANSGROHE Axor Citterio
sink tap set



Falper Menhir sink vanity
(180cm wide) with two sinks



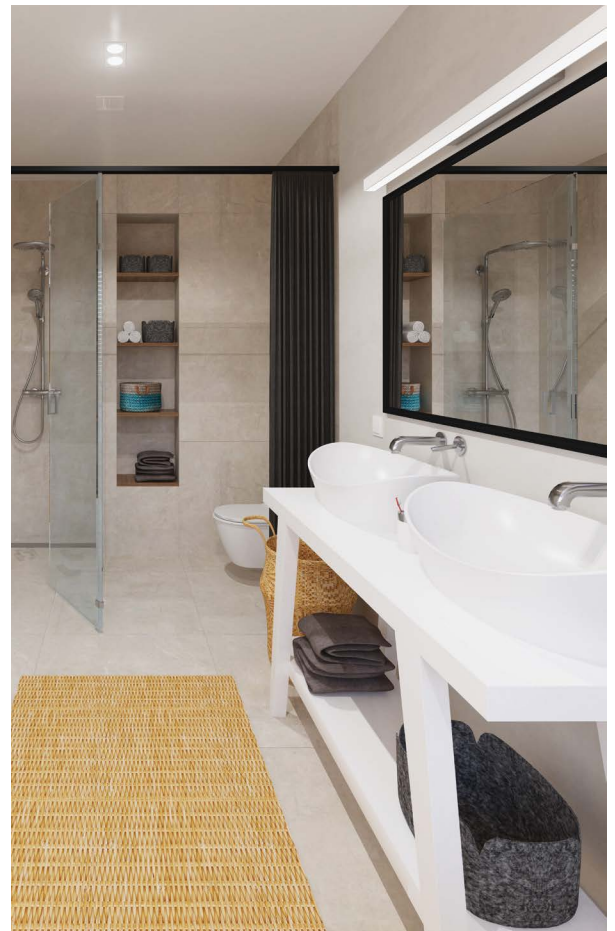
Victoria & Albert Toulouse
(or PAA Bel Canto)
free-standing bathtub
Light gray wall paint



Light gray wall paint



Stone floor tiles
Provenza In-Essence
Composto Sabbia



GUEST BATHROOM (NR. 3)



Wall-mounted toilet KARTELL with soft-close lid



KARTELL sink vanity, 600x460 mm, left-placed bowl, white



HANSGROHE Axor Starck 100 tap set



GABIJA sliding shower door, chrome/glass



Decorative stone tiles Via Art Nouveau A



Light gray wall paint

CHILDREN'S BATHROOM (NR. 14)



KALDEWEI bathtub Puro



Wall-mounted toilet KARTELL with soft-close lid



Falper Menhir sink vanity (90cm wide), wood, one sink



HANSGROHE Raindance shower head set



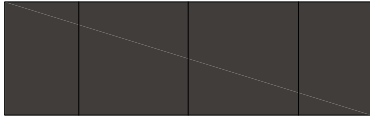
Decorative stone tiles Codicer95 Vintage Classic



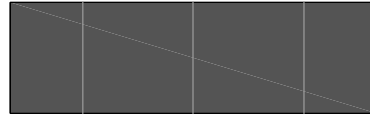
White subway tiles – EQUIPE EVOLUTION blanco brillo (glossy), 75 x 150mm

EXTERIOR

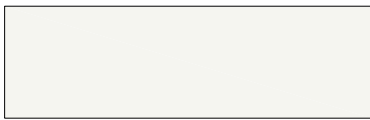
FINISHES



Metal roof, eaves, rain gutters, window ledges, and overhangs



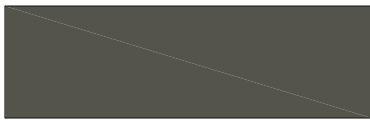
Fiber cement facade cladding plates
RIEDER FiberC
Anthracite MA



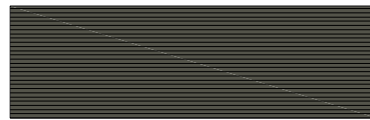
Decorative plaster



Decorative plaster



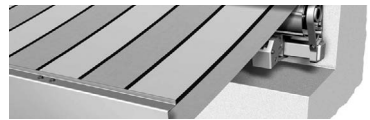
Oak plywood main door



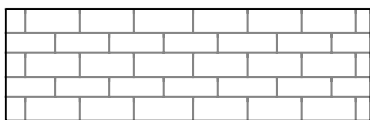
Decorative wooden shutters, wooden handrails made of smoothly peeled, impregnated pine wood.



Windows with high energy efficiency requirements (eg Smartwin). Inside - pine wood, on the outside - aluminum. Three glass package (U glass $\leq 0.6W / m^2K$).



WAREMA® fabric facade awnings ZIP V-FM with screen cloth, box, aluminum guides, 230 V motor.



Stone-finish, white stone interlocking brick: 160x160x80



Stone porch

ASTRO outdoor light fixtures





INFRASTRUCTURE



Well-established
territory

24/7

24-hour
Security



Recreation
zones with
benches



Paved and
lighted
streets and
sidewalks



City sewage
and water



Central gas
heating



City
electricity
supply
(32kW/50A
or
26kW/40A)



Optical
internet

Mežaparka Rezidences covers 31 ha of well-developed territory that is a harmonic continuation of the original Mežaparks district.

The concept is designed to create a closed, private, and completely developed community with villas, twin-villas, row houses, and apartment buildings, the designs for which have been created by well-known Latvian architects.

The first phase of development has been completed. Paved, lit pedestrian walkways and streets are interspersed with benches. The territory has 24 hr security. All necessary utilities have been installed – water and sewage, gas, and electricity.

In order to maintain the architectural harmony of the community, all individual home designs must adhere to the general project concept.

www.mezaparks.lv / info@mezaparks.lv
Phone: + 371 28660033